



ENTER >>>

ROPEWALKS

BOND STREET MACCLESFIELD SK11 6QJ

TO LET HIGH QUALITY OFFICE SPACE
FROM 343 SQ FT TO 5,049 SQ FT

FLEXIBLE SPACE / FLEXIBLE TERMS



DESCRIPTION

With a characterful blend of old and new, brick, glass and wood finishes, this light, bright and bold building will prove a stimulating setting for any company. Ropewalks provides high quality office accommodation in the centre of Macclesfield, one of Cheshire's most prosperous towns.

Ropewalks is built around an attractive courtyard with its own car parking, suiting those companies looking for a distinctive base with style and elegance. Good coffee houses, restaurants and tempting shops are within a stone's throw away along with the convenience of a well-established public transport system. Although Ropewalks has a contemporary design, the result of which is a building of individual character and style where practical matters have not been ignored.

DESCRIPTION

SPECIFICATION

ACCOMMODATION

FLOORPLAN

LOCATION

CONTACTS



DESCRIPTION

SPECIFICATION

ACCOMMODATION

FLOORPLAN

LOCATION

CONTACTS



SPECIFICATION



COMMISSIONAIRE



ON SITE PARKING



CENTRAL HEATING



DOUBLE GLAZING



RAISED ACCESS FLOORS



COMMUNAL KITCHEN



INTERNAL BIKE STORE



BOARDROOM/MEETING ROOM



COMMUNAL SHOWER





LEASE TERMS

Flexible space, flexible terms. Leases with a minimum 12 month term available. All inclusive rent options.

EPC

The EPC rating for this property is B.



DESCRIPTION

SPECIFICATION

ACCOMMODATION

ACCOMMODATION

There are currently a variety of suites available, ranging from 526 sq ft up to 3,003 sq ft.

FLOORPLAN

LOCATION

CONTACTS

CAR PARKING

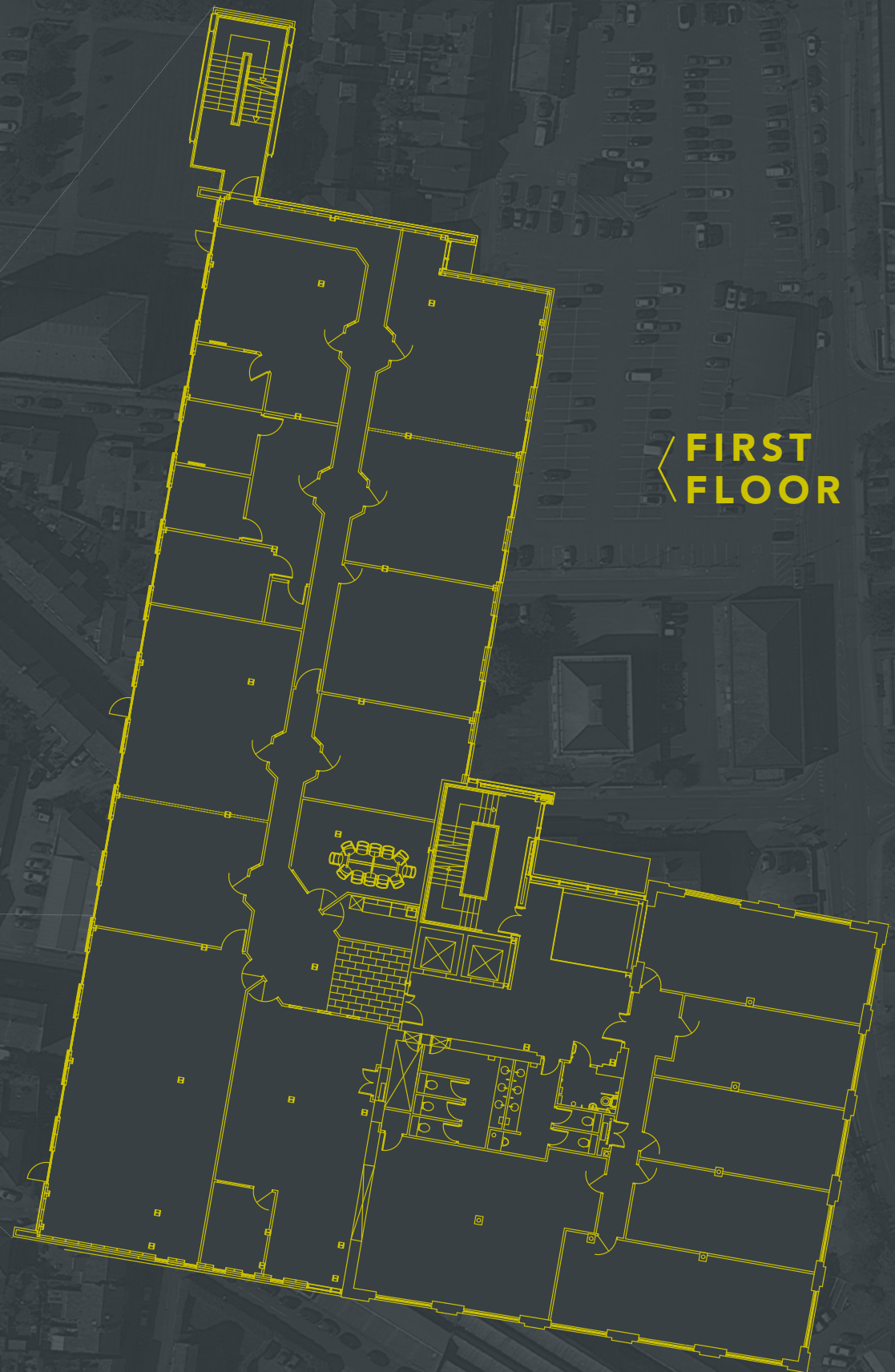
Space allocation to be negotiated dependant on availability. There are also a number of Cheshire East car parks within a short walk of the site.





ROPEWALKS

FLOORPLAN



FIRST FLOOR

DESCRIPTION

SPECIFICATION

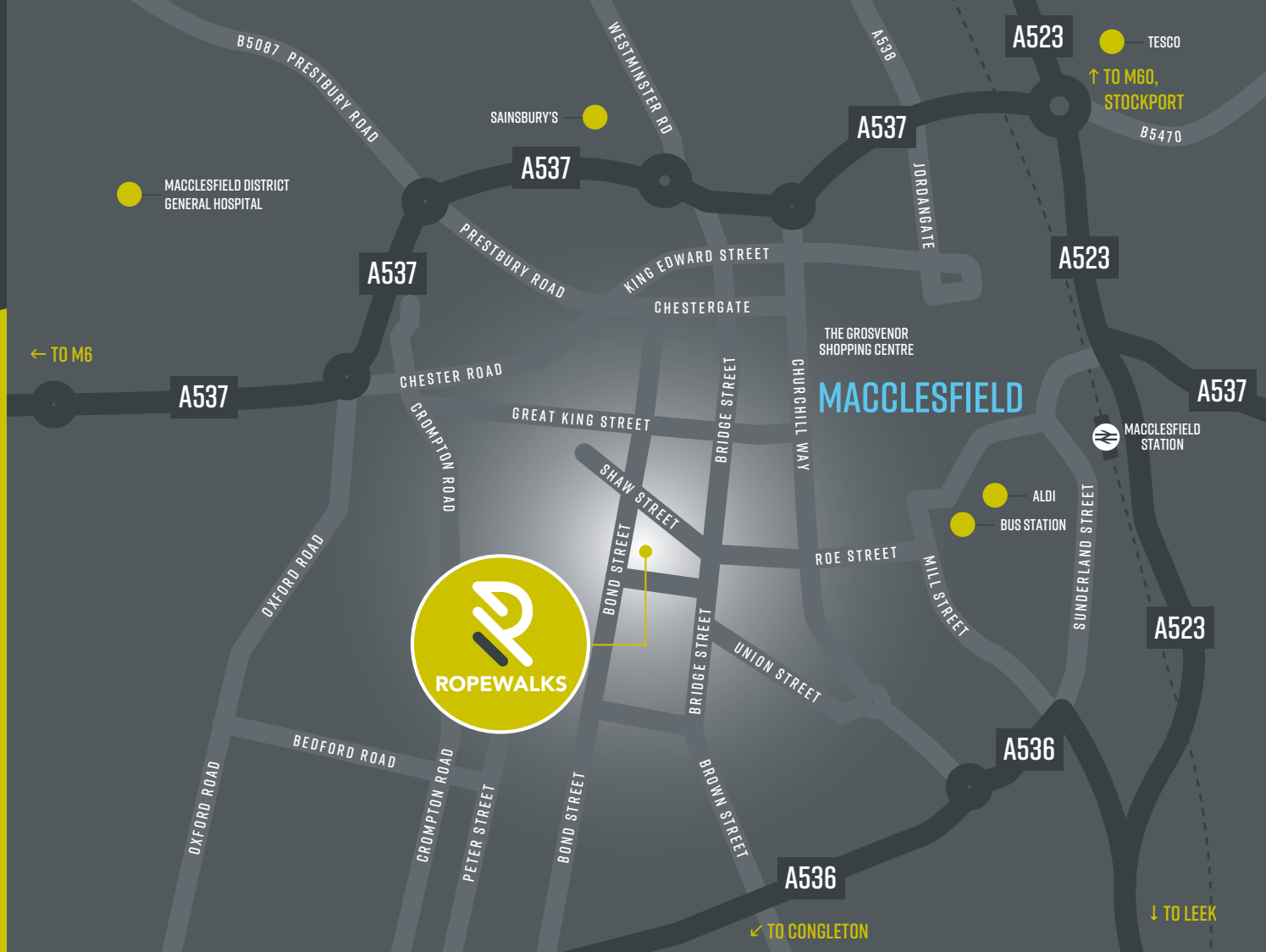
ACCOMMODATION

FLOORPLAN

LOCATION

CONTACTS





DESCRIPTION

SPECIFICATION

ACCOMMODATION

FLOORPLAN

LOCATION

CONTACTS



LOCATION



M6 J19
20 minutes



Macclesfield Station
10 minute walk



Manchester Airport
10 minutes

Located in Macclesfield, one of Cheshire's most prosperous towns, Ropewalks provides high quality office space within a 5 minute walk of Macclesfield's "Retail Core" offering various coffee houses, restaurants and shops. A well-established public transport network surrounds the property, with bus routes close by and Macclesfield Train Station being a 10 minute walk. By car, Ropewalks is less than a mile from the A523 to Stockport and the A537 providing a route towards the M6 and Manchester.





DESCRIPTION

SPECIFICATION

ACCOMMODATION

FLOORPLAN

LOCATION

CONTACTS



VAT

VAT will be charged at the prevailing rate where applicable.

RENT

On application.

BUSINESS CHARGES

There will be a charge levied for the upkeep of the communal areas.

LEGALS

Each party is responsible for their own legal costs.

CONTACTS

For enquiries, please contact the sole letting agent.

RIDLEYTHAW

0161 669 4000

rtllp.co.uk

Important Notice: 1. Particulars: These particulars are not an offer or contract, nor part of one. You should not rely on statements by Ridley Thaw in the particulars or by word of mouth or in writing ("information") as being factually accurate about the property, its condition or its value. Ridley Thaw have no authority to make any representations about the property, and accordingly any information given is entirely without responsibility on the part of the agents, seller(s) or lessor(s). 2. Photos etc: The photographs show only certain parts of the property as they appeared at the time they were taken. Areas, measurements and distances given are approximate only. 3. Regulations etc: Any reference to alterations to, or use of, any part of the property does not mean that any necessary planning, building regulations or other consent has been obtained. A buyer or lessee must find out by inspection or in other ways that these matters have been properly dealt with and that all information is correct. 4. VAT: The VAT position relating to the property may change without notice. April 2024. Designed and Produced by Creativeworld. Tel: 01282 858200.